



SAIEXTM

REDISCOVERING EXPLOSIONPROOF

SOCKETS

CONTROL
PANELS

CONTROL STATIONS

SWITCHGEARS

FLAMEPROOF
LIGHTING FIXTURE

FLAMEPROOF
SWITCHGEAR

CLEAN ROOM
AREA LIGHTING

LIGHTING

LIMIT SWITCHES

SAIEX FLAMEPROOF EQUIPMENTS PVT. LTD.

RANGE CONSIST OF EXPLOSION PROOF

WWW.SAIEX.IN

SAIEX IS
DEDICATED TO
MANUFACTURE,
EXPORT AND SUPPLY
A SERIES OF FLAMEPROOF
EQUIPMENT FOR THE
ELECTRICAL INDUSTRY.



ABOUT US

SAIEX is name for secure future and continuity in quality & services, The company has wide experience in design, manufacturing, supply of explosion proof products for hazardous location in industries like chemical, petrochemical, oil, gas, pharmaceuticals, fertilizer refineries & other allied industries.

With the help of management, by technocrats SAIEX has become one of the leading companies in providing explosion proof products across the country.

The modern manufacturing facility at Anand- Gujarat offers a gateway of new technologies for design, services, technical feedback & un-compromised after sales service to the end users. the company with highly skilled, trained & motivated work force gives a right product for application to user.

SAIEX is dedicated to manufacture, export and supply a series of flameproof equipment for the electrical industry. From design to construction, every process is carefully supervised to Install the flameproof attribute in each piece manufactured by us.



VISION

Continuous improvement in all factors of production to match and exceed global standards. Zero tolerance to human error in all stages of design, production and quality control.

MISSION

Set and attain global standards of quality and performance for 100% safety to men and material against unavoidable hazardous conditions.

THE FOLLOWING WOULD BE HELP US ATTAIN OUR MISSION



PEOPLE

Become a preferred place to work; by attracting the best of engineering talent.



PORTFOLIO

Improvise product range, as per changing climatic and customer demands.



PLANET

Optimize Natural resources; by building long lasting and sustainable products.



PARTNERS

Build and nurture mutually beneficial relation; with all those who help us grow



PRODUCTIVITY

Our aim is to be a fast learning, adaptive and lean organization.



PROFIT

Generate adequate resources for sustenance and propel future investments

EXPLOSION PROOF

- LUMINAR SERIES
- SWITCH GEARS
- CLEAN ROOM SERIES
- MISCELLANEOUS
- PRODUCTS
- ACCESSORIES

“ QUALITY IS REMEMBERED
LONG AFTER THE PRICE IS FORGOTTEN ”

OUR PRODUCT

RANGE CONSIST OF EXPLOSION PROOF

- 1 LUMINARIES
- 2 PANELS
- 3 SWITCH GEARS
- 4 CONTROL PANELS
- 5 DISTRIBUTION BOX
- 6 CLEAN ROOM FITTINGS
- 7 TAILORMADE PRODUCTS
- 8 ACCESSORIES
- 9 MISCELLANEOUS

WE PROVIDE

CONSULTANCY
PROJECT HANDLING
RESEARCH & DEVELOPMENT
RETRO FITTING SERVICE
AFTER SALES SERVICE
MAINTENANCE
BUY BACK

WORLD CLASS QUALITY & HASSLE FREE SOLUTIONS



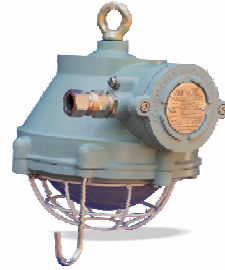
Few common features of these equipment are trouble free performance, less power consumption, resistance to fluctuation, and low maintenance.

LUMINARIES

In every industry sufficient and eco friendly lighting is must. In such requirement our flameproof and weatherproof luminaires series are helpful .the product are manufactured in compliance with flameproof standard to sustain in harsh condition and to perform at its best.

WELL GLASS LIGHT FITTING

CATALOG NO. **SX-1-WLF150S**
GAS GROUP GROUP IIA & IIB
CERTIFICATE CIMFR/TC/P/H364
TEMP RATING 150 W LED - T6
ELECTRICAL RATING 150 W HPMV / 75 LED lamp at 230 V Ac



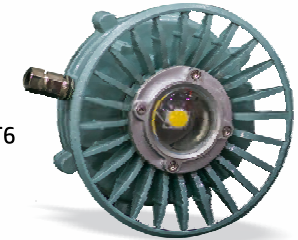
CATALOG NO. **SX-1-250C**
GAS GROUP GROUP IIA & IIBC
CERTIFICATE CIMFR/TC/P/H590
TEMP RATING 26x2W CFL-T6, 200 W GLS-T3, 160W -T4, 250 W HPMV -T3, 75W LED-T6.
ELECTRICAL RATING 26X2W CFL / 200 W GLS / 160W MLL / 250 W HPMV / 75 W LED AT 230V AC.



CATALOG NO. **SX-1-150SC**
GAS GROUP IIA , IIB & IIC
CERTIFICATE CIMFR/TC/P/726
TEMP RATING 160 W MLL-T4 , 150 W LED-T6 , 36 W CFL-T6 , 125 W HPMV-T4.
ELECTRICAL RATING 160WMLW, 80 WLED, 36 WCFL, 150 WLED, 125 W HPMV



CATALOG NO. **SX-1-WLLF-01**
GAS GROUP IIA , IIB & IIC
CERTIFICATE CIMFR/TC/P/2457
TEMP RATING 30W LED-T6 , 45W LED-T6 , 60W LED-T6
ELECTRICAL RATING UP TO 60W LED (COB ONLY)



CATALOG NO. **SX-1-250S**
GAS GROUP IIA & IIB
CERTIFICATE CIMFR/TC/P/1044
TEMP RATING 250 W HPMV-T3 , 75 W LED-T6 , 100 W LED-T5.
ELECTRICAL RATING 75 / 100W LED OR UPTO 100W LED (COB OR SMD)



TUBE LIGHT

CATALOG NO. **SX-1-TL**
GAS GROUP GROUP IIA & IIB
CERTIFICATE CIMFR/TC/P/997
TEMP RATING SX-1-TL2F - 1x18W LED - 1x20W LED SX-1-TL4F - 1x40W LED - 1x36W PLL
ELECTRICAL RATING 1x18W / 1x20W / 1x36W / 1x40W



TYPE OF PROTECTION FLAMEPROOF/EX-PROOF -Exd **PRODUCT STANDARD** IS/IEC 60079-1:2007(Exd),IS/IEC-60529:2001(IP) **AREA CALCIFICATION** ZONE 1-2 & 21-22 , IP-66
APPROVALS CIMFR, BIS, PESO(CCOE) **MOC** AL.ALLOY(LM6), STAINLESS STEEL

REACTOR VESSEL LAMP

CATALOG NO.	SX-1-RV01
GAS GROUP	GROUP IIB
CERTIFICATE	CIMFR/TC/P/H806
TEMP RATING	18W LED-T6, 60W GLS-T5, 13W LED-T6
ELECTRICAL RATING	60W GLS OR 18W CFL OR 13W LED AT 230V AC MAX.



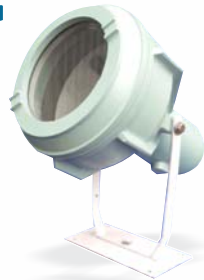
LED SPECIAL LUMINAIRES

CATALOG NO.	SX-1-WLLF-01
GAS GROUP	GROUP IIA , IIB & IIC
CERTIFICATE	CIMFR/TC/P/2457
TEMP RATING	30W LED-T6 , 45W LED-T6, 60W LED-T6.
ELECTRICAL RATING	UP TO 60W LED (COB ONLY)



FLOOD LIGHT / HIGHBAY LIGHT FITTING

CATALOG NO.	SX-1-FL01
GAS GROUP	GROUP IIA & IIB
CERTIFICATE	CIMFR/TC/P/H363
TEMP RATING	150 W LED LAMP-T6, 75 W LED-T6
ELECTRICAL RATING	250 W HPMV LAMP-T4 OR UPTO 150W LED (COB OR SMD)



HAND LAMP FITTING

CATALOG NO.	SX-1-WHL
GAS GROUP	GROUP IIA & IIB
CERTIFICATE	CIMFR/TC/P/1401
TEMP RATING	18W CFL - T6 , 100W GLS, 13W LED - T6
ELECTRICAL RATING	18W CFL - T4 100W GLS LAMP OR 13 W LED (COB OR SMD)



CATALOG NO.	SX-1-FL02
GAS GROUP	GROUP IIA & IIB
CERTIFICATE	CIMFR/TC/P/H367
TEMP RATING	400W HPMV-T3 , 75W LED-T6 , 90W LED-T6 , 250W LED-T5.
ELECTRICAL RATING	400W HPMV LAMP OR UPTO 250W LED (COB OR SMD)



BULK HEAD / STREET LIGHT FITTING

CATALOG NO.	SX-1-BHL 02
GAS GROUP	GROUP IIA & IIB
CERTIFICATE	CIMFR/TC/P/1047
TEMP RATING	3 X 36W CFL-T6 , 26W LED TO 90W LED-T6.
ELECTRICAL RATING	3 X 36W CFL/ 26 W TO 90W LED



CATALOG NO.	SX-1-WLLF-01
GAS GROUP	GROUP IIA , IIB & IIC
CERTIFICATE	CIMFR/TC/P/2457
TEMP RATING	30W LED-T6 , 45W LED-T6 , 60W LED-T6.
ELECTRICAL RATING	UP TO 60W LED (COB ONLY)



CATALOG NO.	SX-1-BHL03
GAS GROUP	GROUP IIA & IIB
CERTIFICATE	CIMFR/TC/P/1290
TEMP RATING	2 X 18W CFL -T6 , 60W LED-T6.
ELECTRICAL RATING	2 X 18W CFL OR UPTO 60W LED (COB OR SMD)



TYPE OF PROTECTION FLAMEPROOF/EX-PROOF -Exd **PRODUCT STANDARD** IS/IEC 60079-1:2007(Exd),IS/IEC-60529:2001(IP) **AREA CALCIFICATION** ZONE 1-2 & 21-22 , IP-66
APPROVALS CIMFR, BIS, PESO(CCOE) **MOC** AL.ALLOY(LM6), STAINLESS STEEL

PANELS

Panels are base of each flameproof Equipments. They can be used as various product like control panels, junction boxes, distribution boxes. The variation of each panels is useful for accommodating different types of internal components.

MULTIWAY JUNCTION BOX

CATALOG NO. **SX-1-001, (350 X 350)**
 GAS GROUP GROUP IIA & IIB
 CERTIFICATE CIMFR/TC/P/H742
 TEMP RATING
 ELECTRICAL RATING 250 AMPS , 550 VAC MAX



CATALOG NO. **SX-1-004C (250 X 250)**
 GAS GROUP GROUP IIA , IIB & IIC
 CERTIFICATE CIMFR/TC/P/H803
 TEMP RATING
 ELECTRICAL RATING 125 AMPS , 550 VAC MAX



CATALOG NO. **SX-1-001C, (400 X 400)**
 GAS GROUP GROUP IIA , IIB & IIC
 CERTIFICATE CIMFR/TC/P/1850
 ELECTRICAL RATING 250 AMPS , 550 VAC MAX



CATALOG NO. **SX-1-005 (550 X 600)**
 GAS GROUP GROUP IIA & IIB
 CERTIFICATE CIMFR/TC/P/1447
 AND CIMFR/TC/S/H587
 TEMP RATING
 ELECTRICAL RATING 400 A , 550 V AC & 230V AC



CATALOG NO. **SX-1-002 (450 X 450)**
 GAS GROUP GROUP IIA & IIB
 CERTIFICATE CIMFR/TC/P/H743
 TEMP RATING
 ELECTRICAL RATING 300 AMPS , 550 VAC MAX



CATALOG NO. **SX-1-005C (564 X 564)**
 GAS GROUP GROUP IIA & IIB & IIC
 CERTIFICATE CIMFR/TC/P/2020
 TEMP RATING
 ELECTRICAL RATING 160 AMPS , 550 VAC MAX



CATALOG NO. **SX-1-004 (250 X 300)**
 GAS GROUP GROUP IIA & IIB
 CERTIFICATE CIMFR/TC/P/H808
 TEMP RATING
 ELECTRICAL RATING 125 AMPS , 500 VAC MAX



CATALOG NO. **SX-1-006C (800 X 800)**
 GAS GROUP GROUP IIA & IIB & IIC
 CERTIFICATE CIMFR/TC/P/106
 TEMP RATING
 ELECTRICAL RATING 250 AMP, 550 VAC MAX



TYPE OF PROTECTION FLAMEPROOF/EX-PROOF -Exd **PRODUCT STANDARD** IS/IEC 60079-1:2007(Exd),IS/IEC-60529:2001(IP) **AREA CALCIFICATION** ZONE 1-2 & 21-22 , IP-66
APPROVALS CIMFR, BIS, PESO(CCOE) **MOC** AL.ALLOY(LM6), STAINLESS STEEL

SWITCH GEARS

In an electric power system, switchgear is the combination of electrical disconnect switches, fuses or circuit breakers used to control, protect and isolate electrical equipment. Switchgear is used both to de-energize equipment to allow work to be done and to clear faults downstream. This type of equipment is directly linked to the reliability of the electricity supply. The Flameproof / Explosion proof Switchgears are designed with compliance and accordance with standards to achieve the desired level of safety and stability.

CONTROL GEAR / CONTROL STATION / REMOTE BOX

CATALOG NO. **SX-1-003 (186 X 278)**
 GAS GROUP GROUP IIA & IIB
 CERTIFICATE CIMFR/TC/P/1587
 TEMP RATING
 ELECTRICAL RATING 63 A, 500 VAC MAX



CATALOG NO. **SX-1-PB01**
 GAS GROUP GROUP IIA & IIB
 CERTIFICATE CIMFR/TC/P/08 AND CIMFR/TC/S/1653
 TEMP RATING
 ELECTRICAL RATING 32 AMPS , 440 VAC MAX



CATALOG NO. **SX-1-004 (250 X 300)**
 GAS GROUP GROUP IIA & IIB
 CERTIFICATE CIMFR/TC/P/H808
 TEMP RATING
 ELECTRICAL RATING 125 AMP , 500 VAC MAX



CATALOG NO. **SX-1-PB01C**
 GAS GROUP GROUP IIA, IIB & IIC
 CERTIFICATE CIMFR/TC/P/872
 TEMP RATING
 ELECTRICAL RATING 32 AMP, 500 VAC MAX



CATALOG NO. **SX-1-JB01 (100 DIA, 140 DIA, 180 DIA)**
 GAS GROUP GROUP IIA & IIB
 CERTIFICATE CIMFR/TC/P/23
 TEMP RATING
 ELECTRICAL RATING 40 A, 550 VAC OR 230 VDC MAX



CATALOG NO. **SX-1-PB02C**
 GAS GROUP GROUP IIA, IIB & IIC
 CERTIFICATE CIMFR/TC/P/827
 TEMP RATING
 ELECTRICAL RATING 63 A , 550 VAC MAX



CATALOG NO. **SX-1-PB03C**
 GAS GROUP GROUP IIA, IIB & IIC
 CERTIFICATE CIMFR/TC/P/154
 TEMP RATING
 ELECTRICAL RATING 125 AMPS , 550 VAC MAX.



TYPE OF PROTECTION FLAMEPROOF/EX-PROOF -Exd **PRODUCT STANDARD** IS/IEC 60079-1:2007(Exd),IS/IEC-60529:2001(IP) **AREA CALCIFICATION** ZONE 1-2 & 21-22 , IP-66
APPROVALS CIMFR, BIS, PESO(CCOE) **MOC** AL.ALLOY(LM6), STAINLESS STEEL

CONTROL PANELS

Normally control panel is easily identified as a equipment which is used to control some complex process, most of the time the control panel is having different kind of controllers installed in it like temperature controller, Rotation Per minute Controller, Process Controller. When all these components are installed in a Flameproof / Explosion proof Enclosure it makes it more secure the work with hazardous environments.

CATALOG NO. **SX-1-001 (350 X 350)**
 GAS GROUP GROUP IIA & IIB
 CERTIFICATE CIMFR/TC/P/H742
 TEMP RATING
 ELECTRICAL RATING 250 AMPS , 550 VAC MAX



CATALOG NO. **SX-1-004C (250 X 250)**
 GAS GROUP GROUP IIA , IIB & IIC
 CERTIFICATE CIMFR/TC/P/1315
 TEMP RATING
 ELECTRICAL RATING 125 AMP , 550 VAC MAX



CATALOG NO. **SX-1-001C(400 X 400)**
 GAS GROUP GROUP IIA , IIB & IIC
 CERTIFICATE CIMFR/TC/P/1850
 TEMP RATING
 ELECTRICAL RATING 250 AMPS , 550 VAC MAX



CATALOG NO. **SX-1-005 (550 X 600)**
 GAS GROUP GROUP IIA & IIB
 CERTIFICATE CIMFR/TC/P/1447 AND CIMFR/TC/S/H587
 TEMP RATING
 ELECTRICAL RATING 400 AMPS , 550 VAC MAX



CATALOG NO. **SX-1-002 (450 X 450)**
 GAS GROUP GROUP IIA & IIB
 CERTIFICATE CIMFR/TC/P/H743
 TEMP RATING
 ELECTRICAL RATING 300 AMP , 550 VAC MAX



CATALOG NO. **SX-1-005C (564 X 564)**
 GAS GROUP GROUP IIA & IIB & IIC
 CERTIFICATE CIMFR/TC/P/2020
 TEMP RATING
 ELECTRICAL RATING 160 AMPS , 550 VAC MAX



CATALOG NO. **SX-1-004 (250 X 300)**
 GAS GROUP GROUP IIA & IIB
 CERTIFICATE CIMFR/TC/P/H803
 TEMP RATING
 ELECTRICAL RATING 125 AMPS , 500 VAC MAX



CATALOG NO. **SX-1-006C (800 X 800)**
 GAS GROUP GROUP IIA & IIB & IIC
 CERTIFICATE CIMFR/TC/P/106
 TEMP RATING
 ELECTRICAL RATING 250 AMPS , 550 VAC MAX



TYPE OF PROTECTION FLAMEPROOF/EX-PROOF -Exd **PRODUCT STANDARD** IS/IEC 60079-1:2007(Exd),IS/IEC-60529:2001(IP) **AREA CALCIFICATION** ZONE 1-2 & 21-22 , IP-66
APPROVALS CIMFR, BIS, PESO(CCOE) **MOC** AL.ALLOY(LM6), STAINLESS STEEL

DISTRIBUTION BOX

The distribution box / distribution panel is used to distribute power. To handle high rated power it is must to use heavy equipment and components and where the heavy power is switched on and off the heat and sparks are generated eventually. The Flameproof / Explosion proof distribution box / panel is used in such areas where a small amount of mistake can lead to a disaster.

CATALOG NO. **SX-1-001 (350 X 350)**
 GAS GROUP GROUP IIA & IIB
 CERTIFICATE CIMFR/TC/P/H742
 TEMP RATING
 ELECTRICAL RATING 250 AMPS , 550 VAC MAX



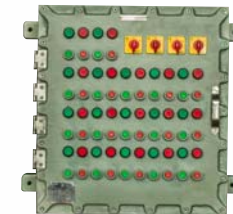
CATALOG NO. **SX-1-004C (250 X 250)**
 GAS GROUP GROUP IIA , IIB & IIC
 CERTIFICATE CIMFR/TC/P/1315
 TEMP RATING
 ELECTRICAL RATING 125 AMP , 550 VAC MAX



CATALOG NO. **SX-1-001C(400 X 400)**
 GAS GROUP GROUP IIA , IIB & IIC
 CERTIFICATE CIMFR/TC/P/1850
 TEMP RATING
 ELECTRICAL RATING 250 AMPS , 550 VAC MAX



CATALOG NO. **SX-1-005 (550 X 600)**
 GAS GROUP GROUP IIA & IIB
 CERTIFICATE CIMFR/TC/P/1447 AND CIMFR/TC/S/H587
 TEMP RATING
 ELECTRICAL RATING 400 AMPS , 550 VAC MAX



CATALOG NO. **SX-1-002 (450 X 450)**
 GAS GROUP GROUP IIA & IIB
 CERTIFICATE CIMFR/TC/P/H743
 TEMP RATING
 ELECTRICAL RATING 300 AMPS , 550 VAC MAX



CATALOG NO. **SX-1-005C (564 X 564)**
 GAS GROUP GROUP IIA & IIB & IIC
 CERTIFICATE CIMFR/TC/P/2020
 TEMP RATING
 ELECTRICAL RATING 160 AMPS , 550 VAC MAX



CATALOG NO. **SX-1-004 (250 X 300)**
 GAS GROUP GROUP IIA & IIB
 CERTIFICATE CIMFR/TC/P/H803
 TEMP RATING
 ELECTRICAL RATING 125 AMPS , 500 VAC MAX



CATALOG NO. **SX-1-006C (800 X 800)**
 GAS GROUP GROUP IIA & IIB & IIC
 CERTIFICATE CIMFR/TC/P/106
 TEMP RATING
 ELECTRICAL RATING 250 AMPS , 550 VAC MAX



TYPE OF PROTECTION FLAMEPROOF/EX-PROOF -Exd **PRODUCT STANDARD** IS/IEC 60079-1:2007(Exd),IS/IEC-60529:2001(IP) **AREA CALCIFICATION** ZONE 1-2 & 21-22 , IP-66
APPROVALS CIMFR, BIS, PESO(CCOE) **MOC** AL.ALLOY(LM6), STAINLESS STEEL

CLEAN ROOM FITTING

In different types of industries the cleanliness is must to have attribute, like pharmaceutical industry, chemical industry and other related industries. Keeping the requirement of safety with look and elegance. The Flame proof / Explosion Proof Clean Room Fittings are designed to perform at its best and to last with a look.

CATALOG NO. **SX-1-PB01**
GAS GROUP GROUP IIA, IIB
CERTIFICATE CIMFR/TC/P/08 AND CIMFR/TC/S/1653
TEMP RATING
ELECTRICAL RATING 32 AMPS , 440 VAC MAX



CATALOG NO. **SX-1-BHL02**
GAS GROUP GROUP IIA & IIB
CERTIFICATE CIMFR/TC/P/1047
TEMP RATING 3 X 36W CFL-T6, 26W LED TO 90W LED-T6.
ELECTRICAL RATING 3 X 36W OR 2 X 36W CFL LAMP OR UPTO 90W LED (COB OR SMD)



CATALOG NO. **SX-1-PB01C**
GAS GROUP GROUP IIA, IIB & IIC
CERTIFICATE CIMFR/TC/P/872
TEMP RATING
ELECTRICAL RATING 32 AMPS , 500 VAC MAX



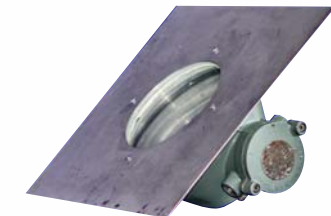
CATALOG NO. **SX-1-BHL03**
GAS GROUP GROUP IIA & IIB
CERTIFICATE CIMFR/TC/P/1290
TEMP RATING 2 X 18W CFL -T6 , 60W LED-T6.
ELECTRICAL RATING 2 X 18W CFL OR UPTO 60W LED (COB OR SMD)



CATALOG NO. **SX-1-PB02C**
GAS GROUP GROUP IIA, IIB & IIC
CERTIFICATE CIMFR/TC/P/827
TEMP RATING
ELECTRICAL RATING 63 AMPS , 550 VAC MAX



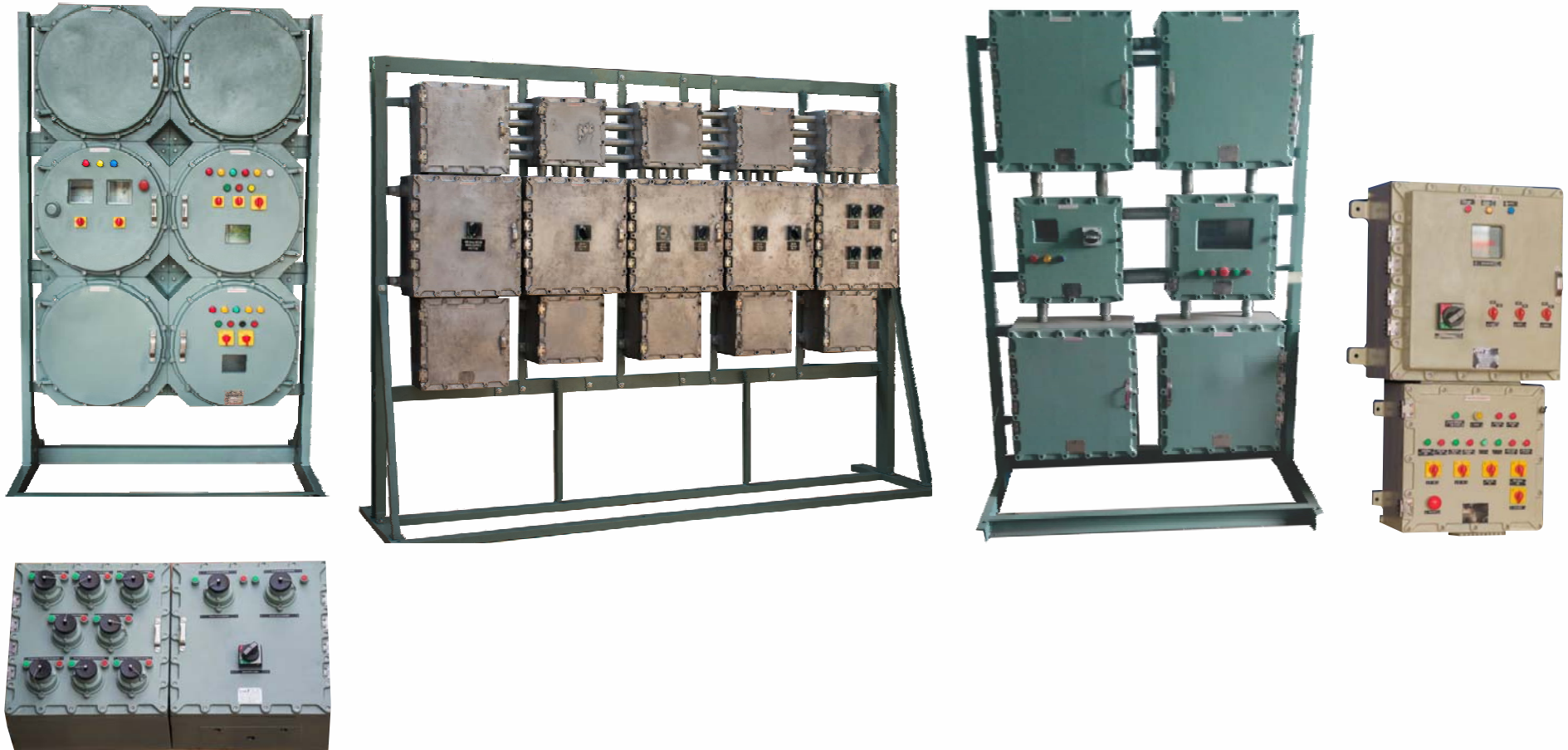
CATALOG NO. **SX-1-WLF150S**
GAS GROUP GROUP IIA & IIB
CERTIFICATE CIMFR/TC/P/H364
TEMP RATING 150 W HPMV-T4 , 75 W LED-T6.
ELECTRICAL RATING 150 W HPMV OR UPTO 75W LED (COB OR SMD)



TYPE OF PROTECTION FLAMEPROOF/EX-PROOF -Exd **PRODUCT STANDARD** IS/IEC 60079-1:2007(Exd),IS/IEC-60529:2001(IP) **AREA CALCIFICATION** ZONE 1-2 & 21-22 , IP-66
APPROVALS CIMFR, BIS, PESO(CCOE) **MOC** AL.ALLOY(LM6), STAINLESS STEEL

TAILORMADE PRODUCT

It's evident that in every industry some equipment are required to be made especially on account of their functionality and need of operation. And when it's mandatory to keep the safety as priority, for that the Flame proof / Explosion Proof products are designed and engineered to achieve the need with optimum quality.



TYPE OF PROTECTION FLAMEPROOF/EX-PROOF -Exd **PRODUCT STANDARD** IS/IEC 60079-1:2007(Exd),IS/IEC-60529:2001(IP) **AREA CALCIFICATION** ZONE 1-2 & 21-22 , IP-66
APPROVALS CIMFR, BIS, PESO(CCOE) **MOC** AL.ALLOY(LM6), STAINLESS STEEL

ACCESSORIES

A thing which can be added to something else in order to make it more useful, versatile, or attractive. When the products are manufactured to meet certain requirements but when the consumer is needing something more to enhance the functionality. Not to forget the quality and assurance of safety for the Flameproof / Explosion proof accessories are the prime objective.

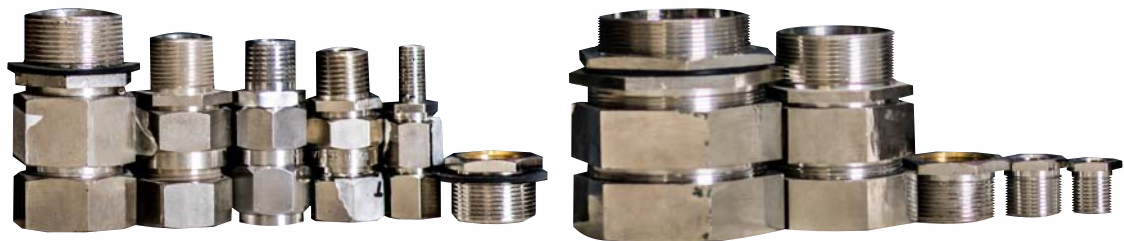


CABLE GLAND

CATALOG NO. SX-1-CG01
GAS GROUP GROUP IIA , IIB & IIC
CERTIFICATE CIMFR/TC/P/H368

PLUG , ADAPTOR , REDUCER

CATALOG NO. SX-1-PAR
GAS GROUP GROUP IIA, IIB & IIC
CERTIFICATE CIMFR/TC/P/625



MISCELLANEOUS

THERMOCOUPLE HEAD

CATALOG NO. **SX-1-TH01**
 GAS GROUP GROUP IIA & IIB
 CERTIFICATE CIMFR/TC/P/1524
 TEMP RATING
 ELECTRICAL RATING 10 AMPS , 240 VAC OR 110 VDC MAX.



LIMIT SWITCH

CATALOG NO. **SX-1-LS01**
 GAS GROUP. GROUP IIB
 CERTIFICATE. CIMFR/TC/P/1525
 CERTIFICATE. CIMFR/TC/P/1525



HEATER ENCLOSURE

CATALOG NO. **SX-1-HE**
 GAS GROUP GROUP IIA & IIB
 CERTIFICATE CIMFR/TC/P/1417 AND CIMFR/TC/S/571
 TEMP RATING
 ELECTRICAL RATING UPTO 3.0 KW AT 415 V AC



FLP FAN & FLP COOLER

CATALOG NO. **SX-1-IM01**
 GAS GROUP GROUP IIA & IIB
 CERTIFICATE CIMFR/TC/P/157
 TEMP RATING 160 W MLL-T4 , 90 W LED-T6 ,
 36 W CFL-T6 , 125 W HPMV-T4.
 ELECTRICAL RATING 5.0 KW/ 6 HP , 415 VAC ,
 1440 RPM, 3 PHASE



CAMERA ENCLOSURE

CATALOG NO. **SX-1-CE01**
 GAS GROUP GROUP IIA & IIB
 CERTIFICATE CIMFR/TC/P/H25
 TEMP RATING
 ELECTRICAL RATING WORKING ON 12 VDC WITH
 INCOMMING 230 VAC SUPPLY



CALCIFICATION ZONE 1-2 & 21-22 , IP-

TYPE OF PROTECTION FLAMEPROOF/EX-PROOF -Exd **PRODUCT STANDARD** IS/IEC 60079-1:2007(Exd),IS/IEC-60529:2001(IP) **AREA**

APPROVALS CIMFR, BIS, PESO(CCOE) **MOC** AL.ALLOY(LM6), STAINLESS STEEL

TYPE OF PROTECTION FLAMEPROOF/EX-PROOF -Exd **PRODUCT STANDARD** IS/IEC 60079-1:2007(Exd),IS/IEC-60529:2001(IP) **AREA CALCIFICATION** ZONE 1-2 & 21-22 , IP-66

APPROVALS CIMFR, BIS, PESO(CCOE) **MOC** AL.ALLOY(LM6), STAINLESS STEEL

VALUED CLIENT



THROUGHOUT OUR BUSINESS PARTNER



NEW PRODUCTS



SAIEX FLAMEPROOF EQUIPMENTS PVT. LTD.

1801/09, 4th Phase, Shree Sai Glass Compound, GIDC., Vithal Udyog Nagar,
Anand 388 121, Gujarat, india **P.:** + 91 2692 235252 **M.:** +91 83479 22208 / 09
E.: marketing@saiex.in **w.:** www.saiex.in